



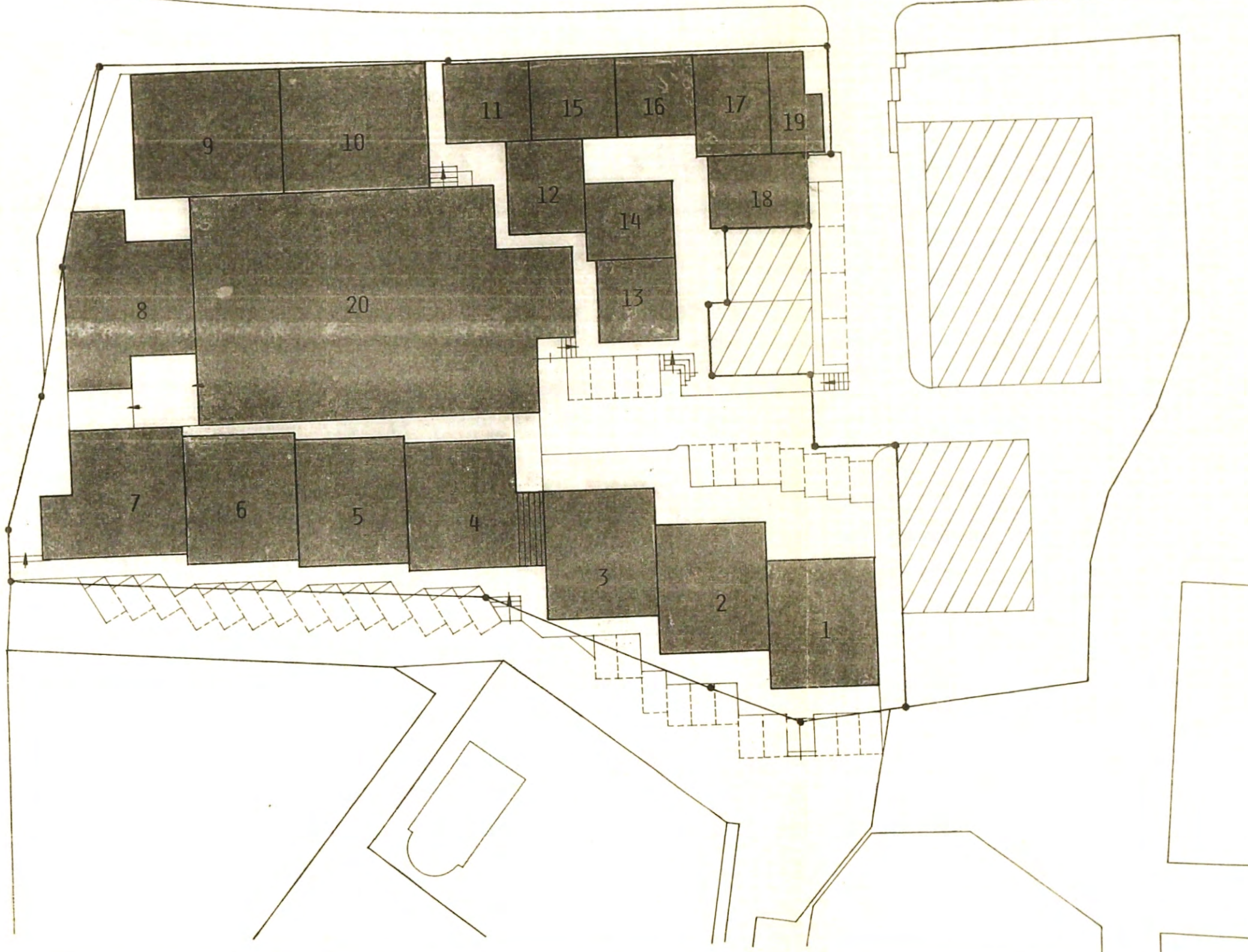


legenda

-  limite do lote (2ª fase)
-  edifícios existentes
-  lotes propostos
-  faixa de servidão pública

via 42-A



requerente

ELSATUR
Empreendimentos Imobiliários Lda

estudo

LOTEAMENTO
Lote 4.12.1T (2ª fase) - Vilamoura

contem

PLANTA DOS LOTES

escala 1/500

data JULHO 87

o arquitecto

JST

5