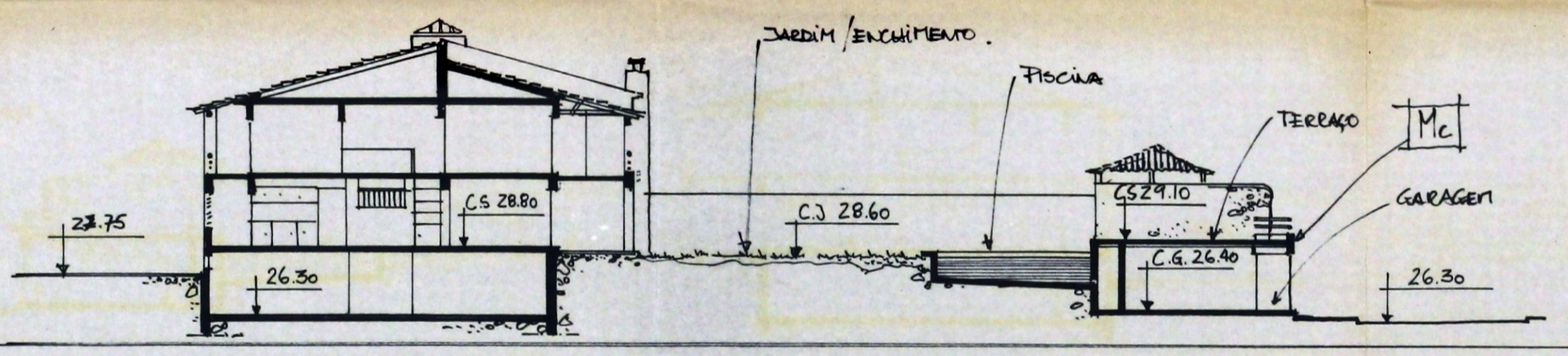


cores

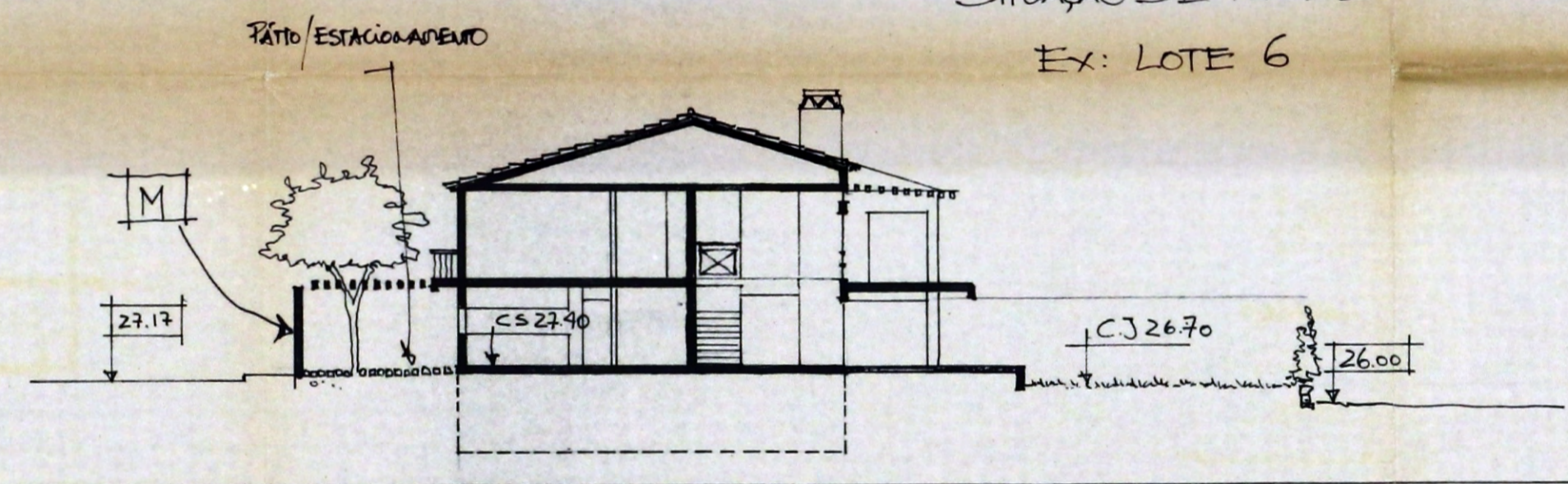
- AMARELOS - 0040-Y10R / 0040-Y / 0020-Y10R / 0030-Y / 0030-Y10R
- CREMES - 0010-Y / 0010-Y-10R / 0010-Y-20R
- ROSAS / SALTÃO - 0020-Y50R / 0020-Y40R / 0020-Y-30R / 0010-Y-50R / 0010-Y40R
- AZUIS - 1040 R70B / 1050 R70B / 2060 R70B / 2040 R70B
- VERDELIÇOS - 3050 Y90R
- BRANCO

REFERÊNCIAS: CATÁLOGO "COLORIX DA CIN"  
MEDIANTE INDICATIVO DAS TONALIDADES

SITUAÇÃO DESNIVELADA  
EX: LOTE 39



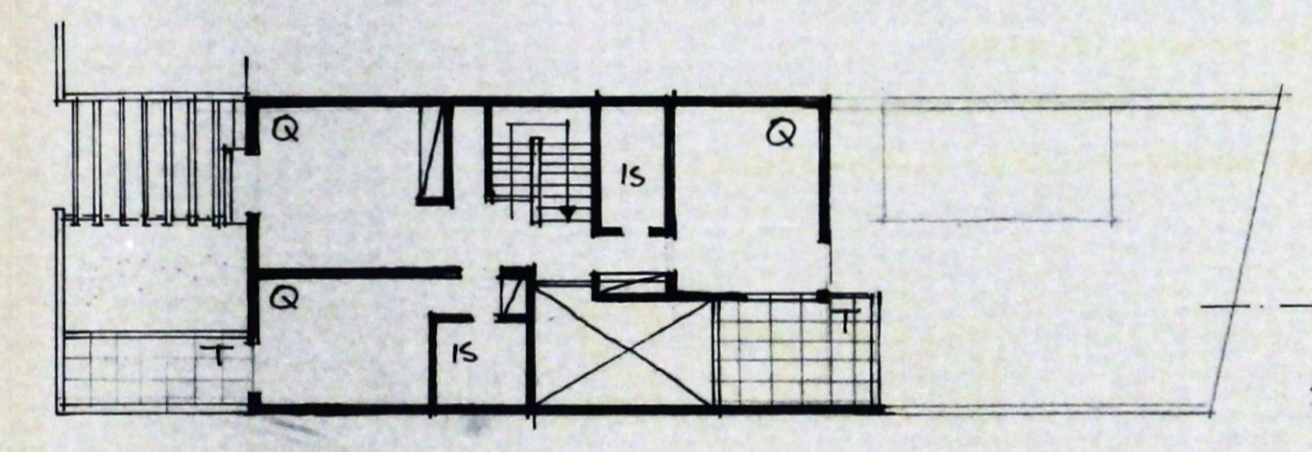
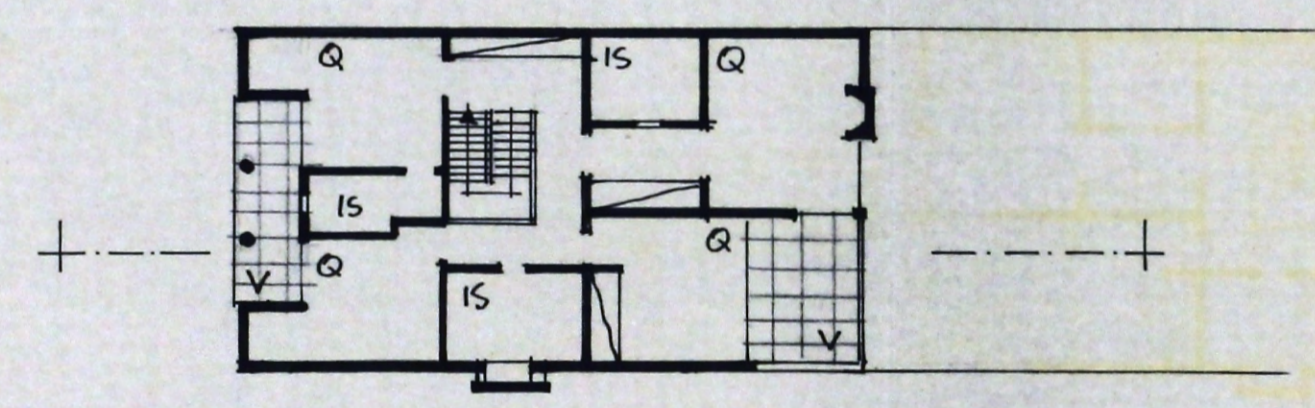
SITUAÇÃO DE NÍVEL  
EX: LOTE 6



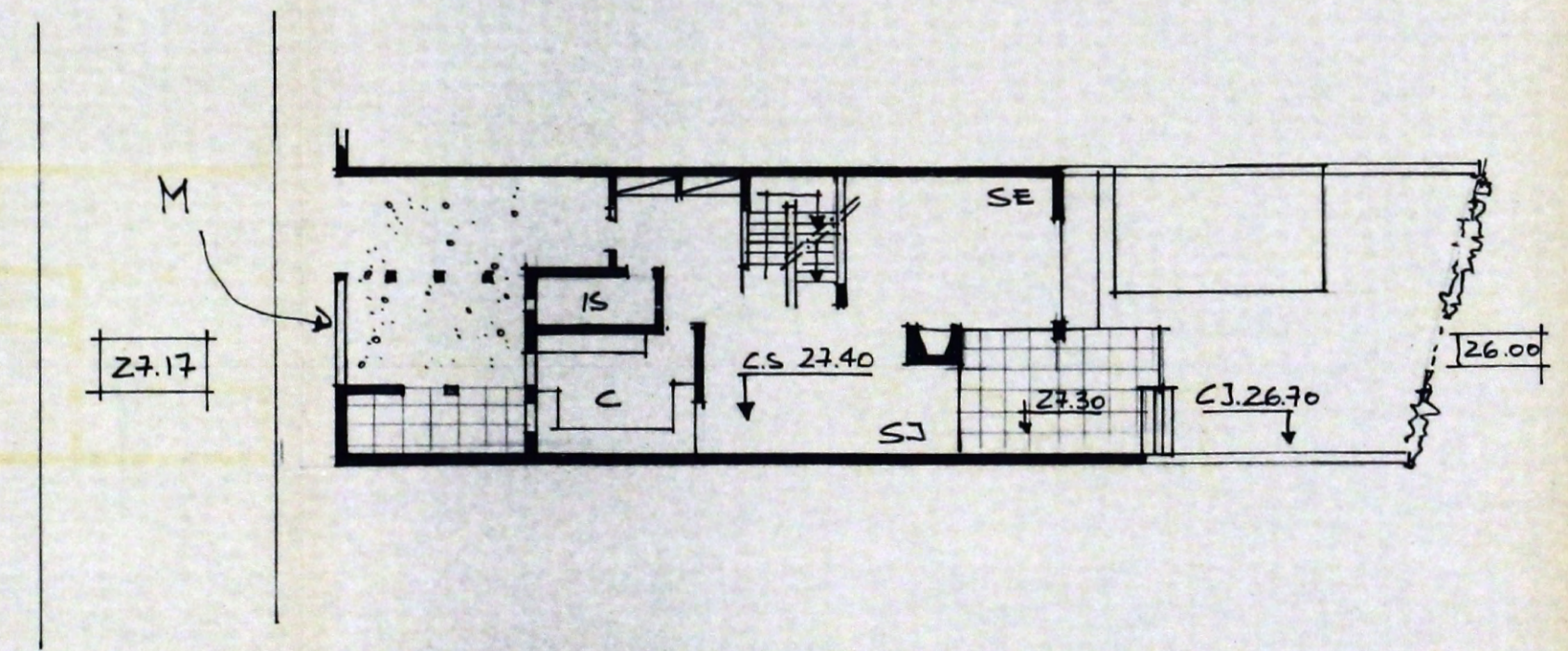
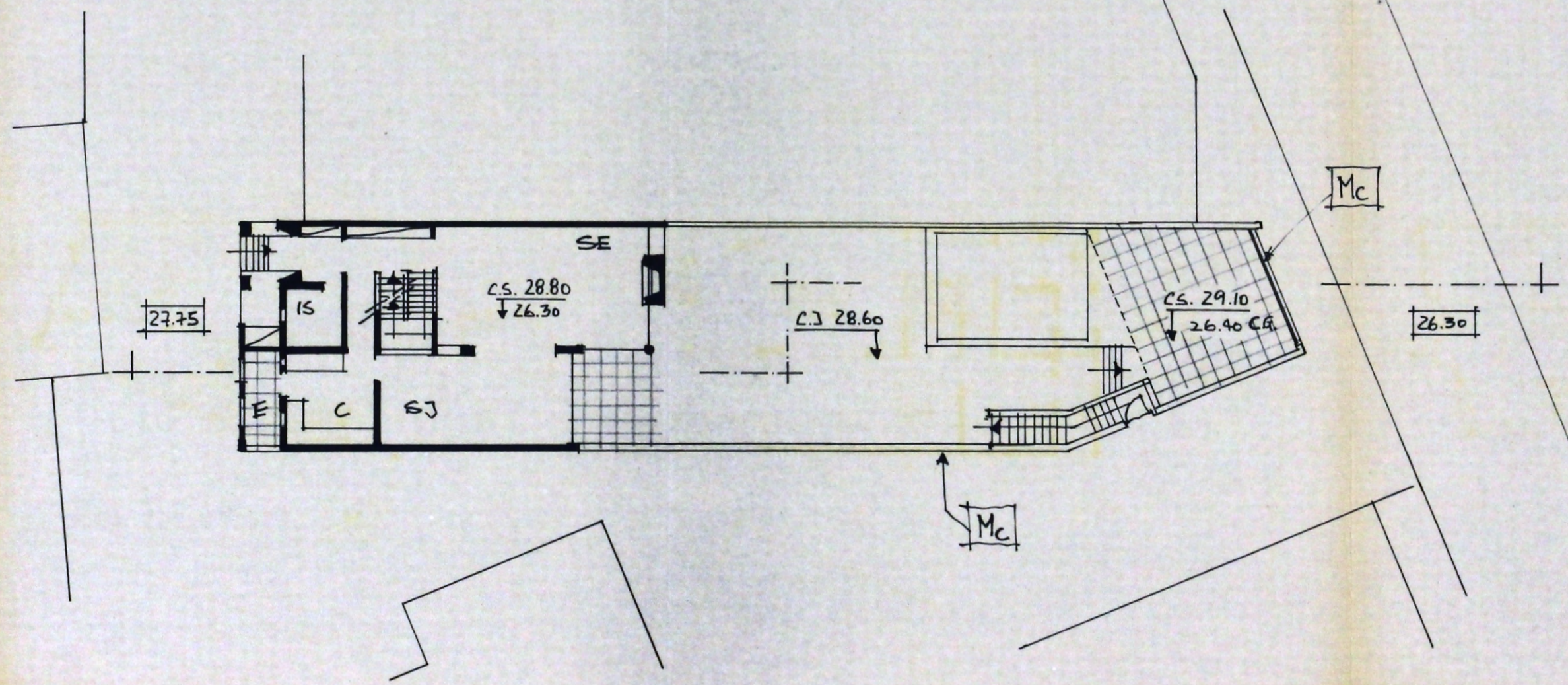
cut

- 0.00 COTAS DOS ARRELUAMENTOS / VIA PÚBLICA.
- C.S - COTA DE SOLEIRA / ENTADA
- C.J - COTA MÉDIA DO JARDIM (ACONSELHADA)
- C.G - COTA DA GARAGEM OU CAIXA ESTACIONAMENTO.

piso 2



piso 1



Notas e observações:

*ju*

6.1.2. - Encosta das Oliveiras

Regulamento / cores / cortes

Data: Maio.97 Escala: 1:200 Ref: 21.505

Alterações: *[Signature]*